



MAKHANLAL CHATURVEDI RASHTRIYA PATRAKARITA AVAM SANCHAR VISHWAVIDYALAYA, BHOPAL.

CHARACTERISTIC FEATURE

2

- POP OF COLOURS
- METAL JALI
- MOTIVATIONAL/FUN QUOTES
- ARCHES

CHARACTERISTIC FEATURE

3

WHY POP OF COLOURS ?

- THE FAÇADE OF THE BUILDING HAS DOMINANT CHARACTER WHICH IS THE YELLOW POP OF COLOUR .SO, TO FURTHER ACCENTUATE IT AND **TO ADD CHARACTER** IN THE INTERIOR THE POP OF COLOURS ARE USED PARTICULARLY TO BE IN THE CONTEXT WITH THE EXTERIORS.
- MOST IMPORTANTLY **TO PRESERVE THE INTEREST OF THE USER.**

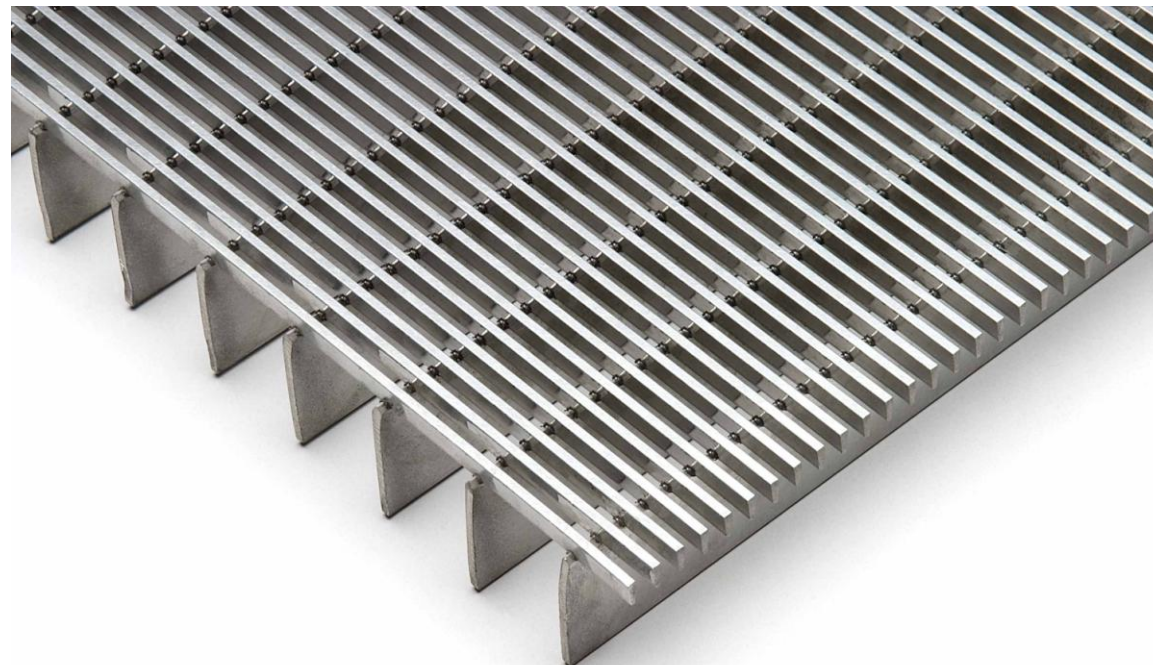


CHARACTERISTIC FEATURE

4

WHY METAL JALI?

- JOURNALISM REMAINS AN IMPORTANT OCCUPATION IN THE DIGITAL AGE, AND WHETHER YOU'RE COVERING LOCAL STORIES OR GLOBAL EVENTS, YOU NEED TO HAVE STRONG QUALITIES TO DO A GREAT JOB.
- AND WHEN IT COMES ON TO BUILDING MATERIAL , WE ARE WELLKNOWN OF THE CORE QUALITY OF METAL THAT IS, ITS STRENGTH.



CHARACTERISTIC FEATURE

5

WHY MOTIVATIONAL/FUN QUOTES?

- COLLEGE IS STRESSFUL AND UNDOUBTEDLY A ROLLERCOASTER OF EMOTIONS.
- IT'S EASY TO GET INTO A CYCLE WHERE STUDENTS LACK MOTIVATION, CONFIDENCE, AND DRIVE.
- SO, TO BOOST AND INSPIRE MORE ,THESE QUOTES CAN PUT ALL IN THE MOOD TO TRY HARDER.

be fearless in
the pursuit of
what sets your
soul on fire.

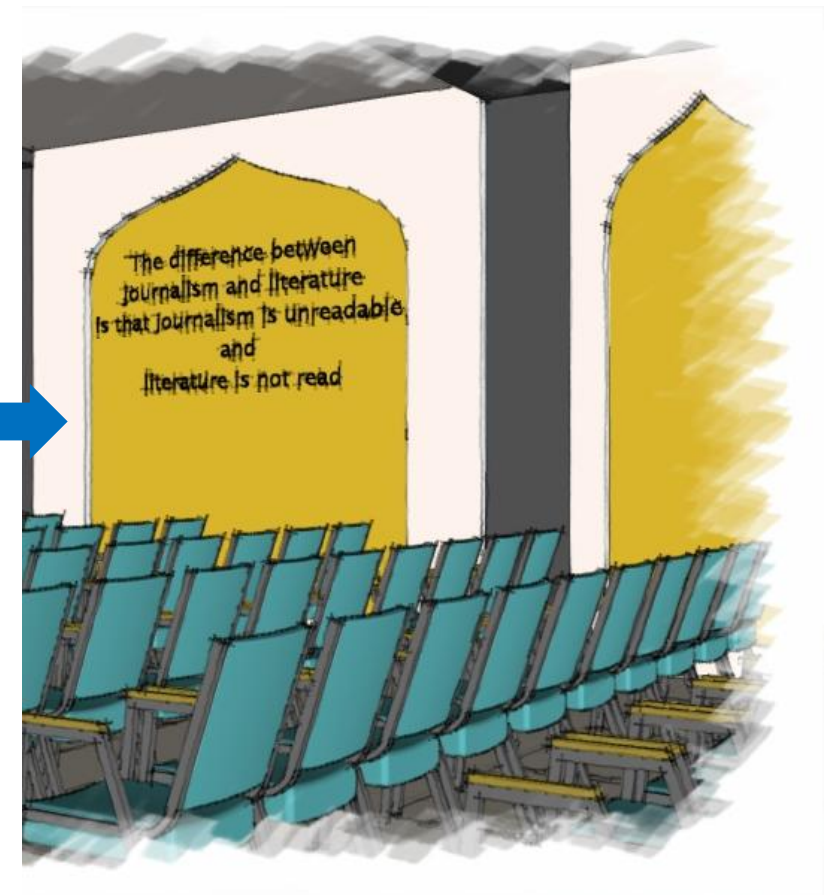
THE HARDER
YOU WORK
FOR SOMETHING,
THE GREATER
YOU'LL FEEL
WHEN YOU
ACHIEVE IT.

CHARACTERISTIC FEATURE

6

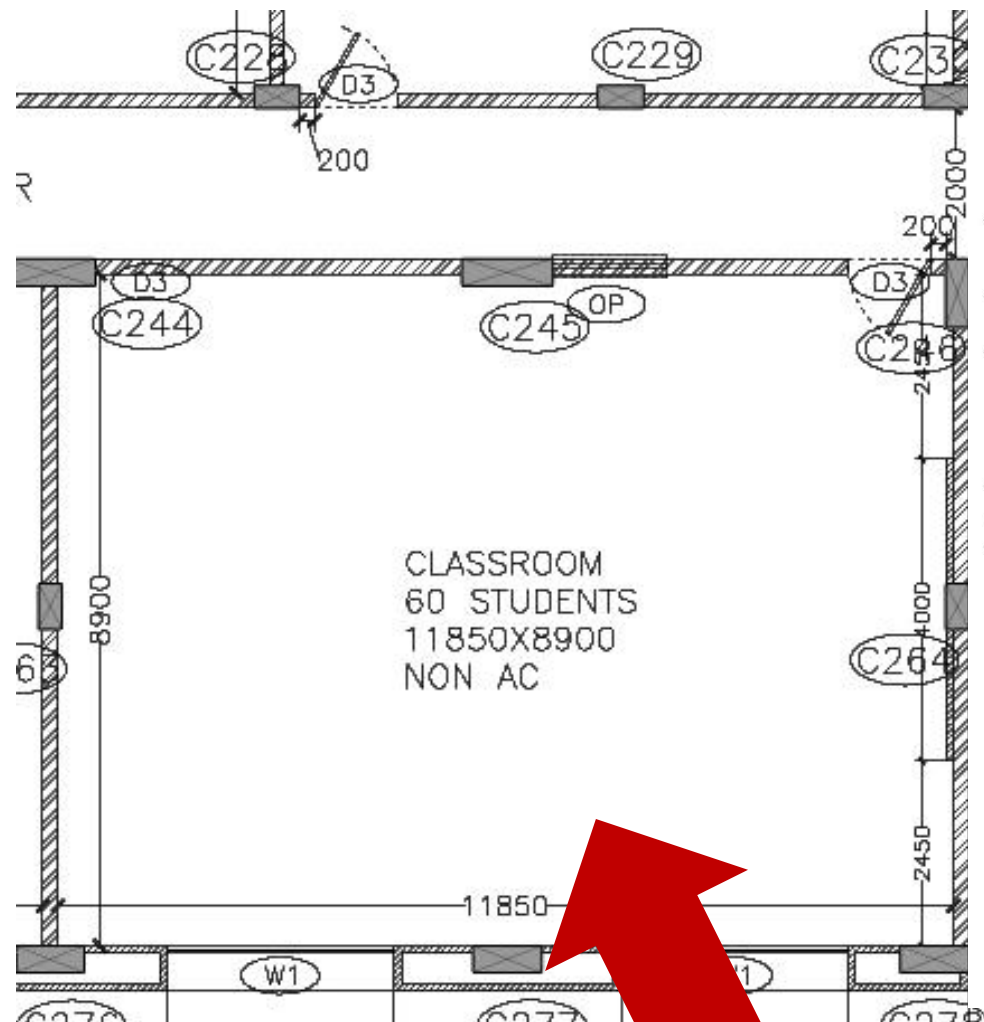
WHY ARCHES?

- TO MAKE THE INTERIORS IN CONTEXT WITH THE ARCHITECTURE OF THE BUILDING.

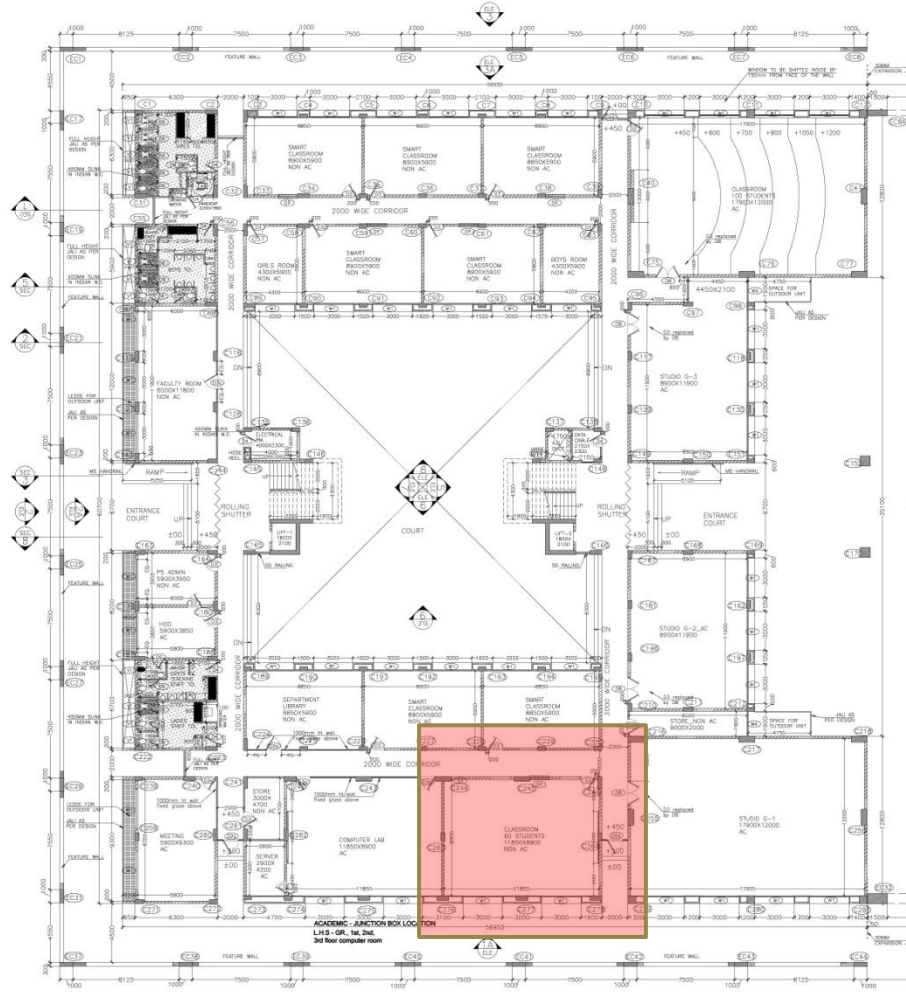


CLASSROOM-ACADEMIC

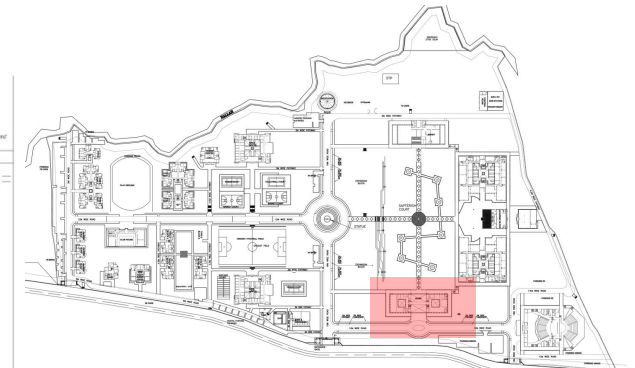
7



VIEW



GROUND FLOOR LHS



KEY PLAN

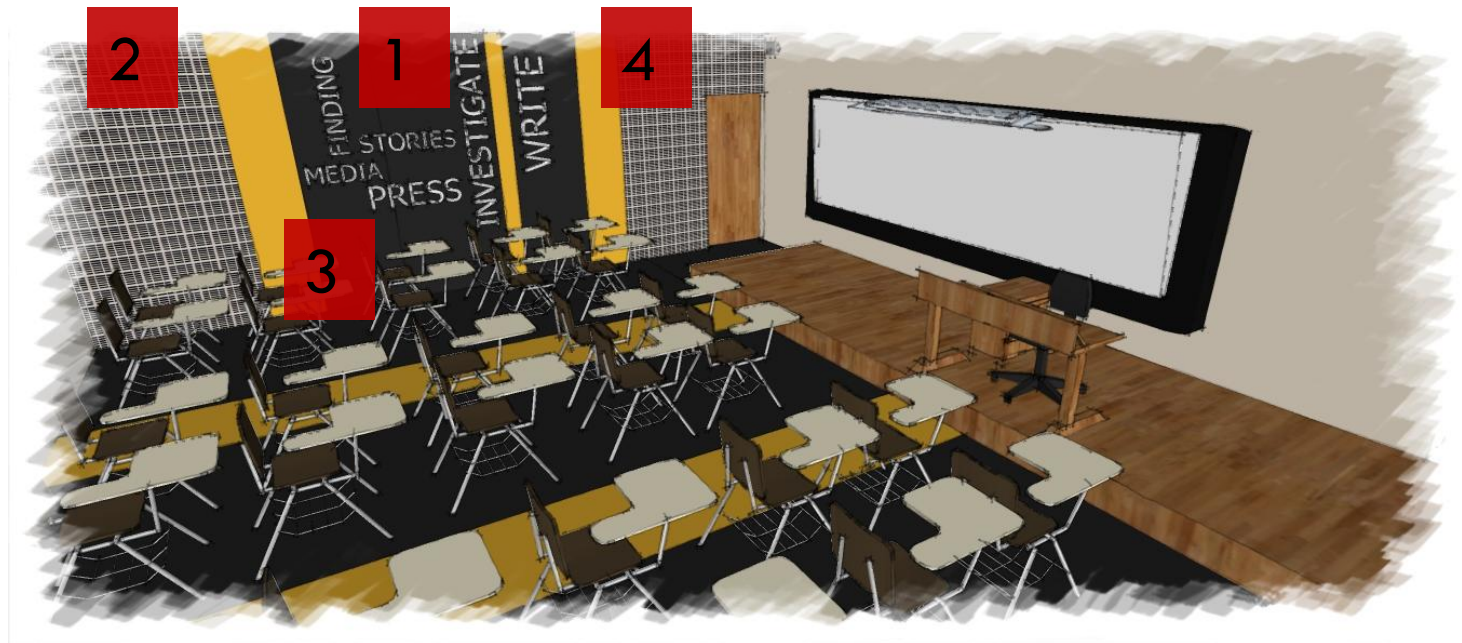
CLASSROOM

8



MATERIALS/FEATURES

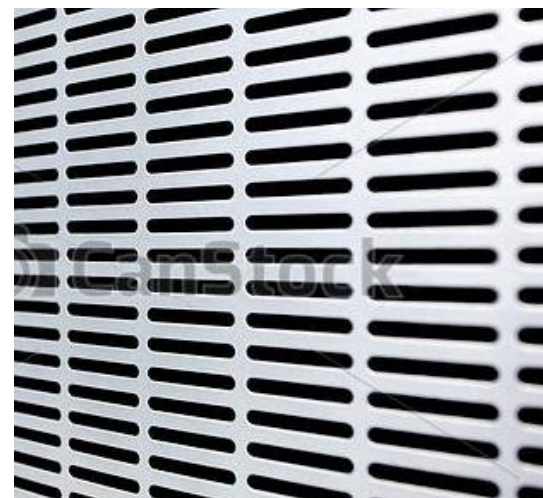
9



4. POP OF COLOUR
ON WALL/FLOOR TILES



1. TEXT WALL ART



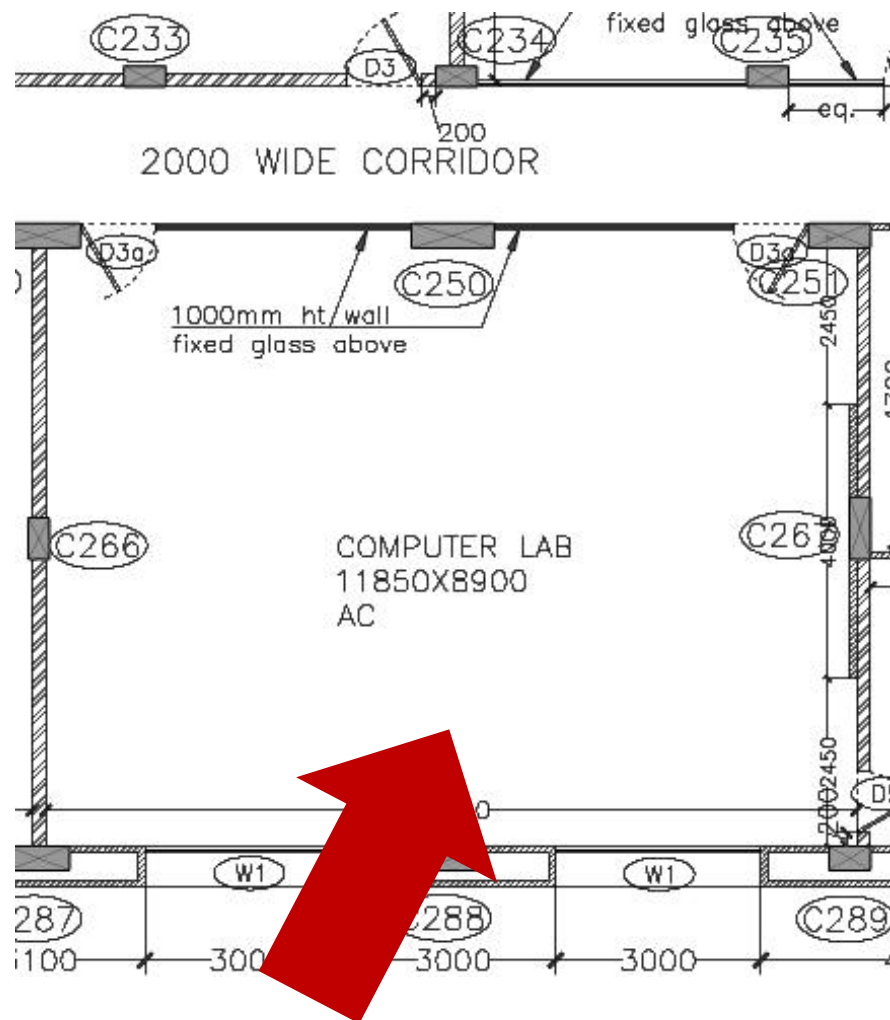
2. METAL GRATE



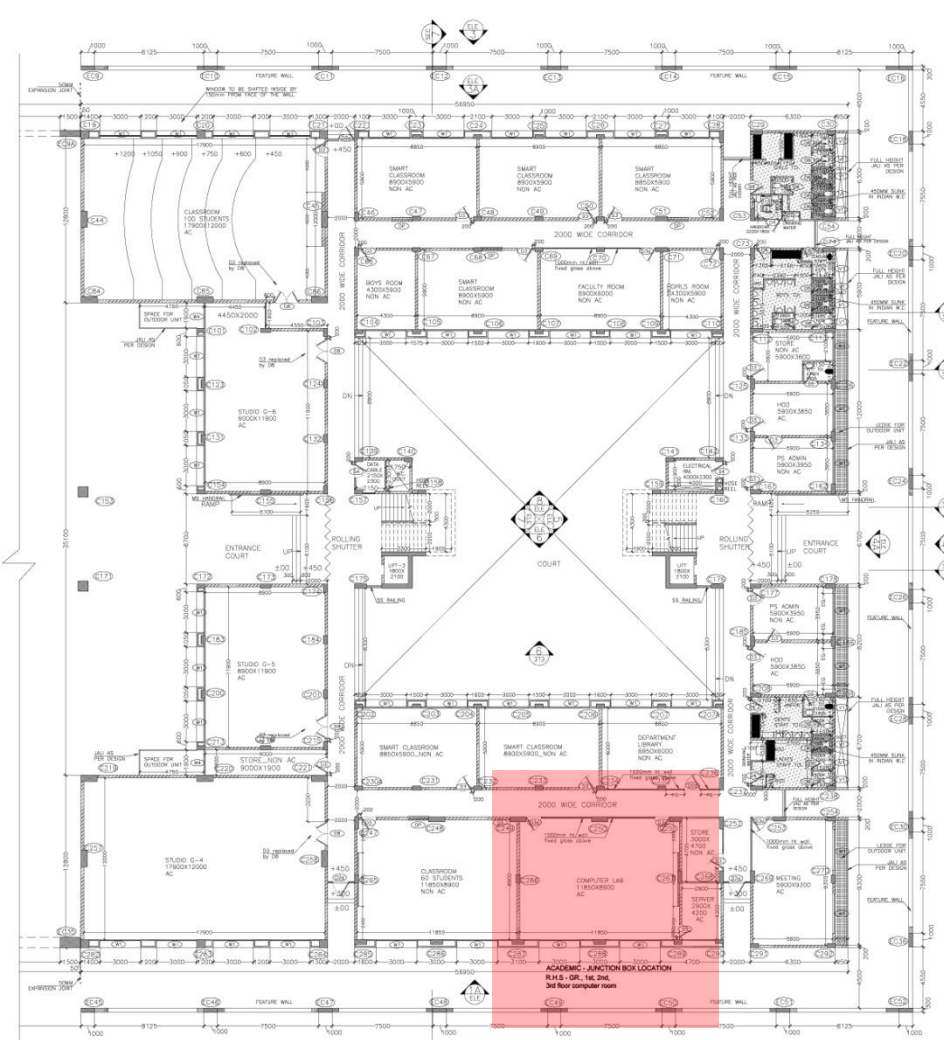
3. WALL PAINT

COMPUTER LAB-ACADEMIC

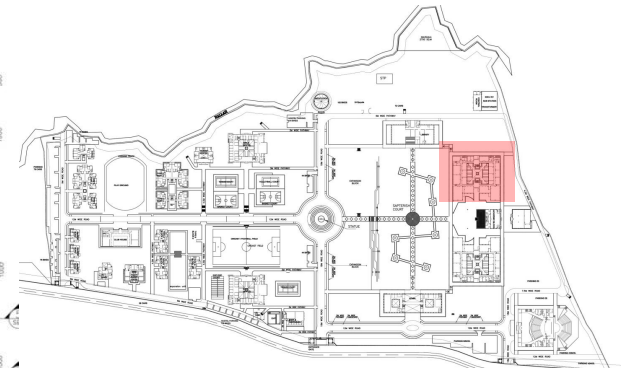
10



VIEW



GROUND FLOOR RHS



KEY PLAN

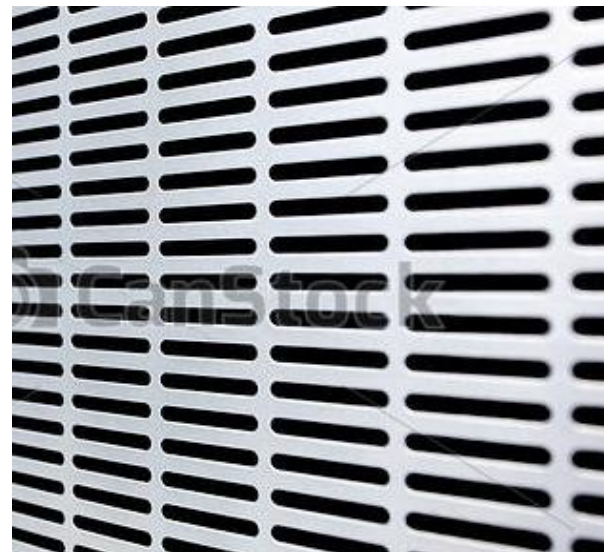
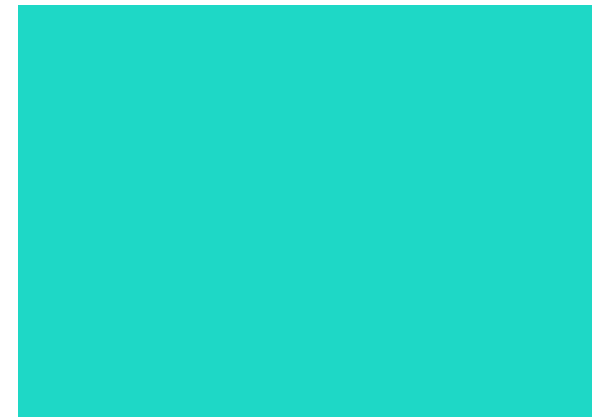
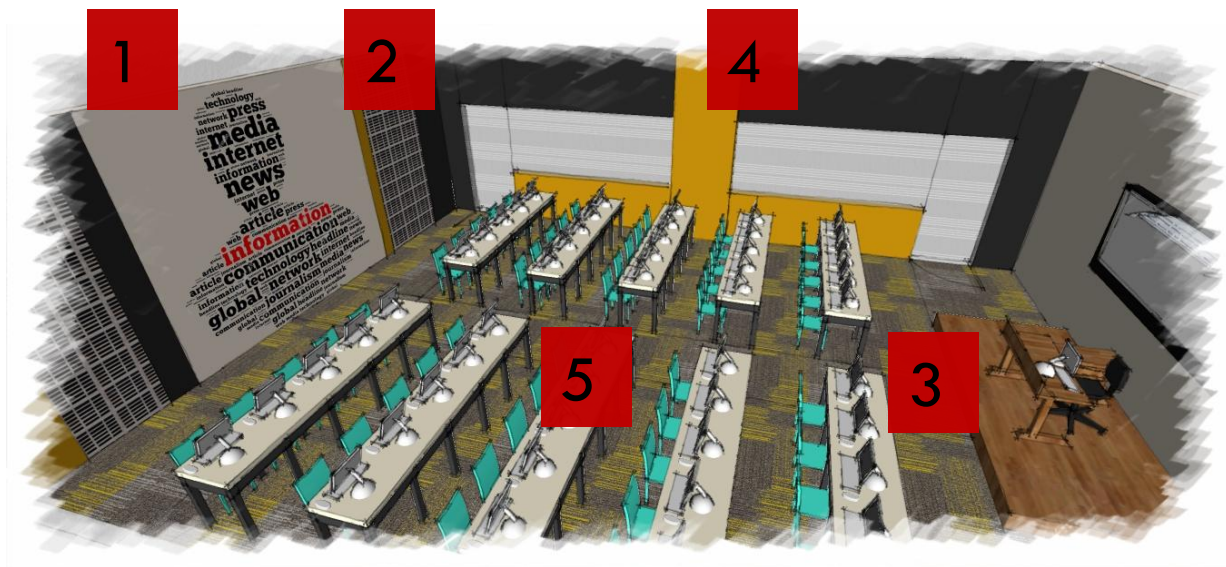
COMPUTER LAB

11



MATERIALS/FEATURES

12



13



STUDIO 3- FILM PRODUCTION

14



MATERIALS/FEATURES

15



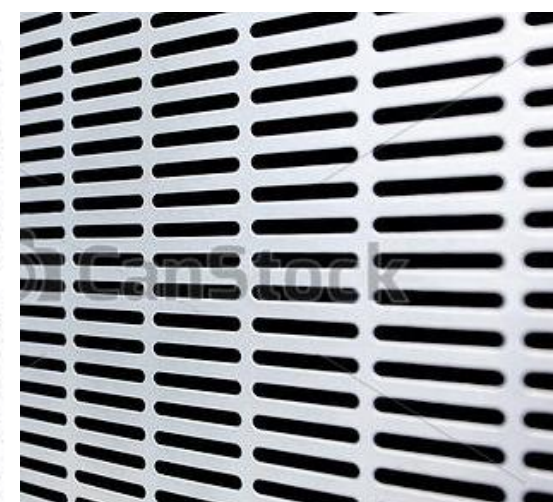
4. POP OF COLOUR
ON WALL



1. LAMINATED/VINYL FLOOR



2. RUBBER FLOOR MAT



3. METAL GRATE

16



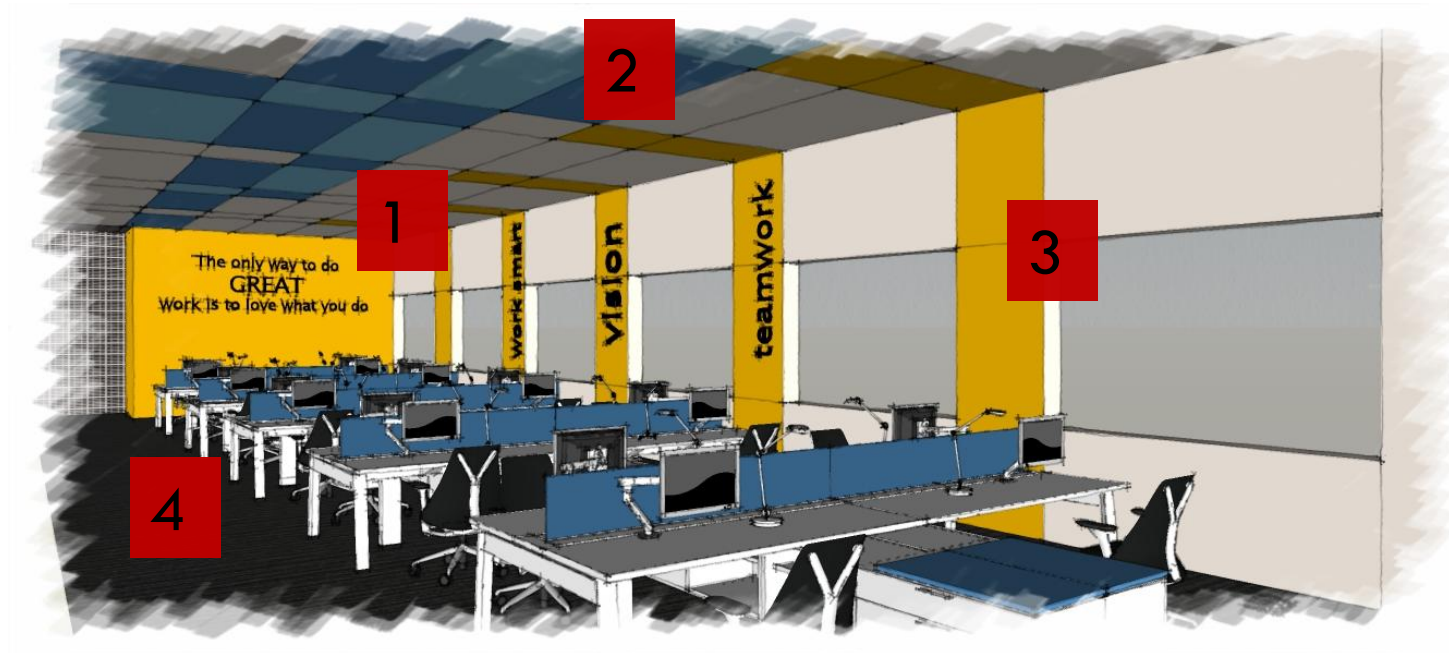
STAFF WORKSTATION-ADMIN

17

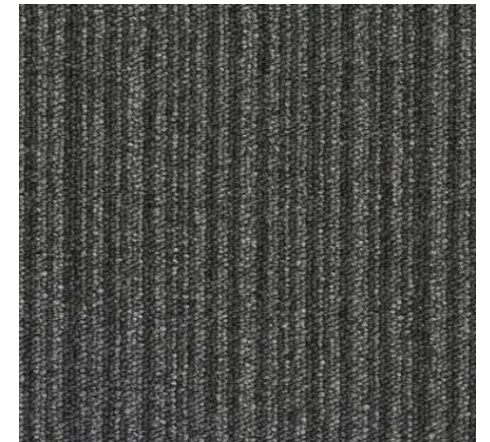


MATERIALS/FEATURES

18



3. POP OF COLOUR
ON WALL



4. CARPET TILES
ON FLOOR



1. MOTIVATIONAL QUOTES ON WALL

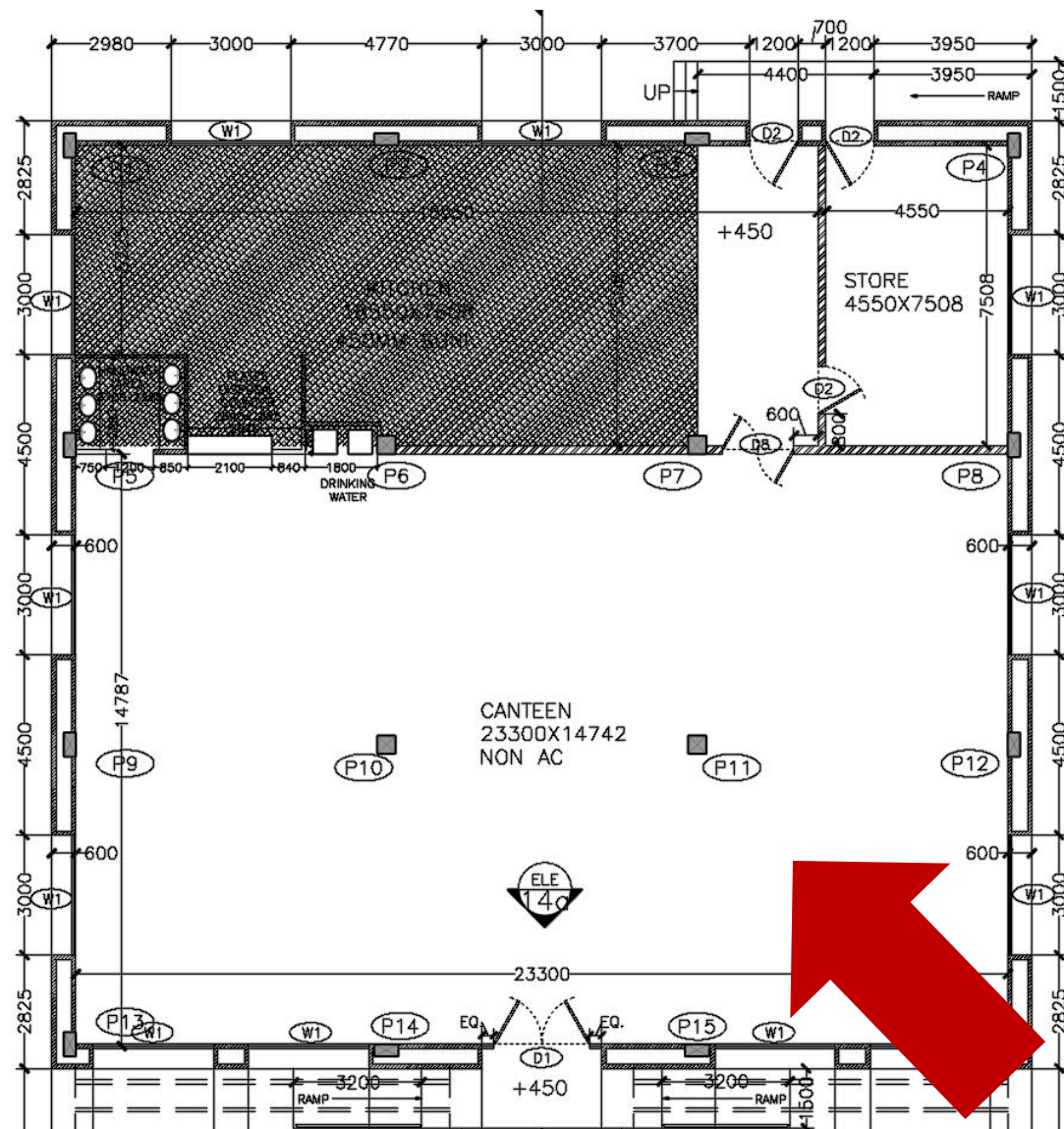


2. COLOURFUL FALSE CEILING PANELS
AND POP OF COLOUR - FURNITURE

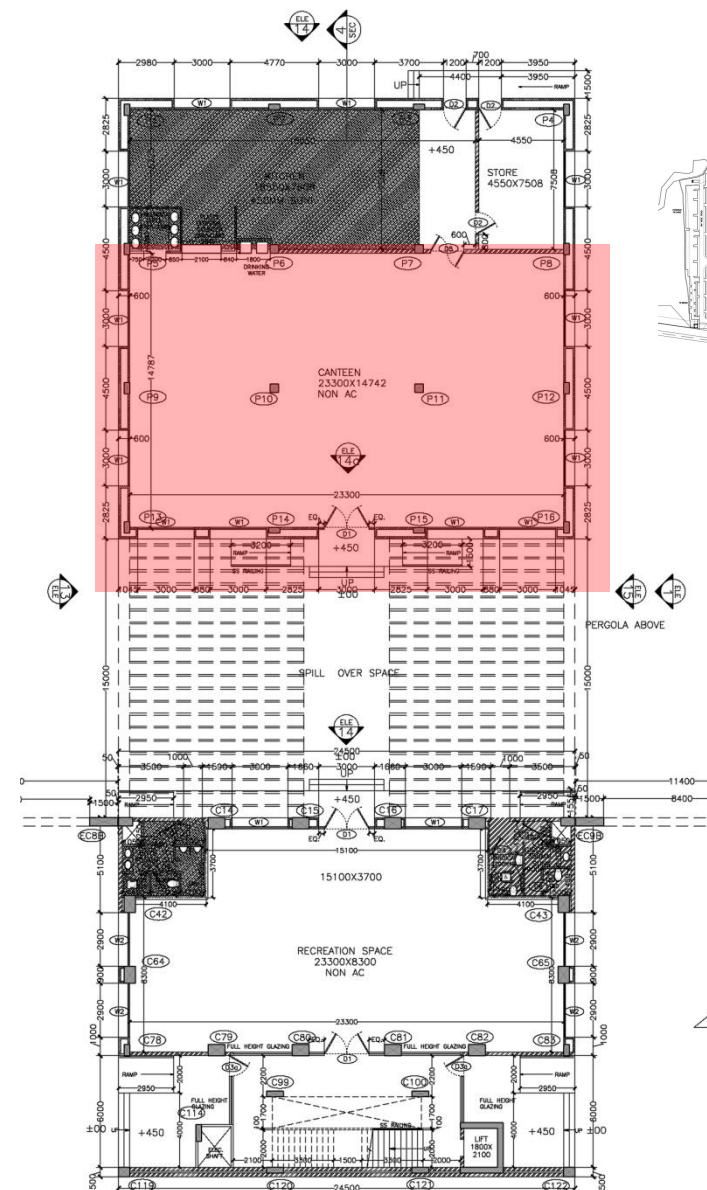


CANTEEN-ACADEMIC

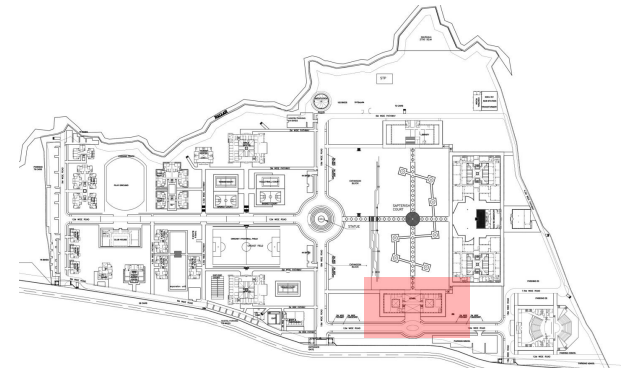
19



VIEW



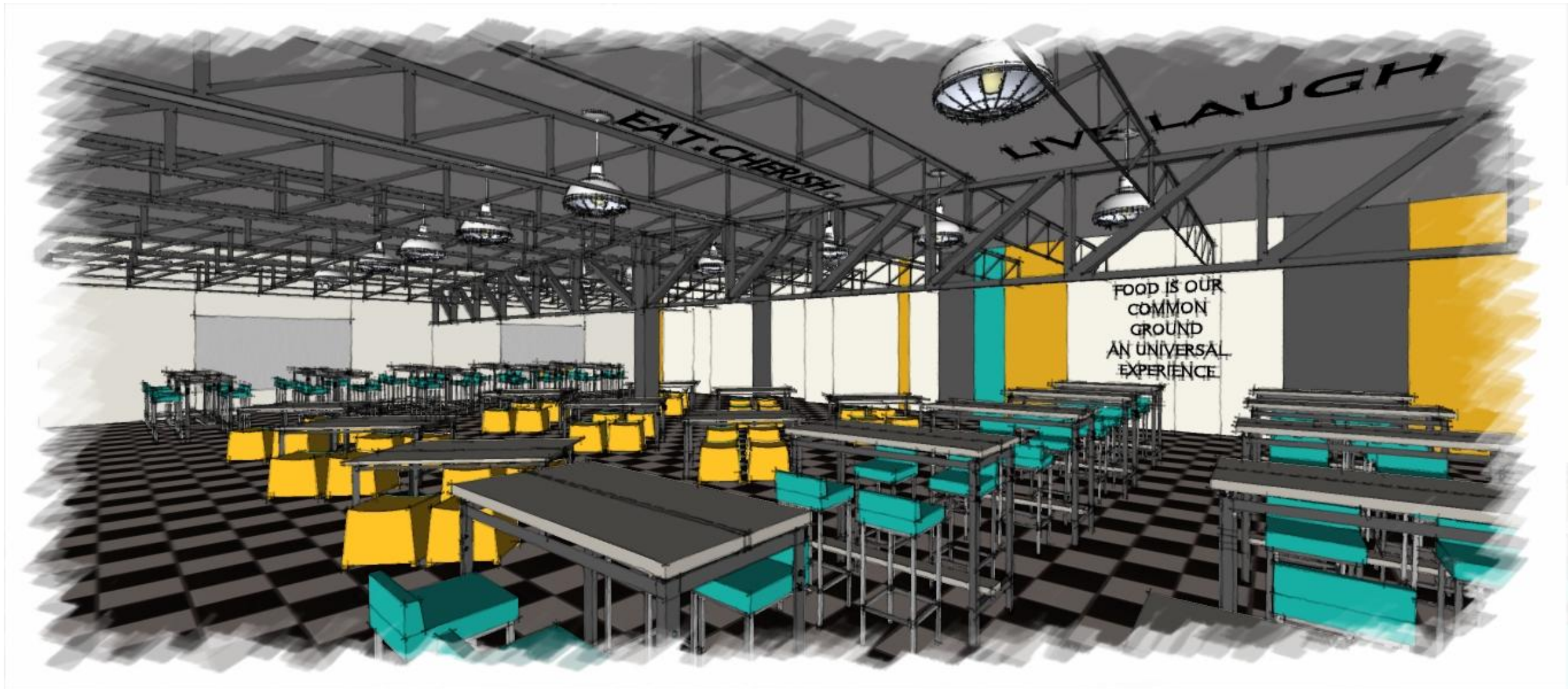
GROUND FLOOR CENTRE BLOCK



KEY PLAN

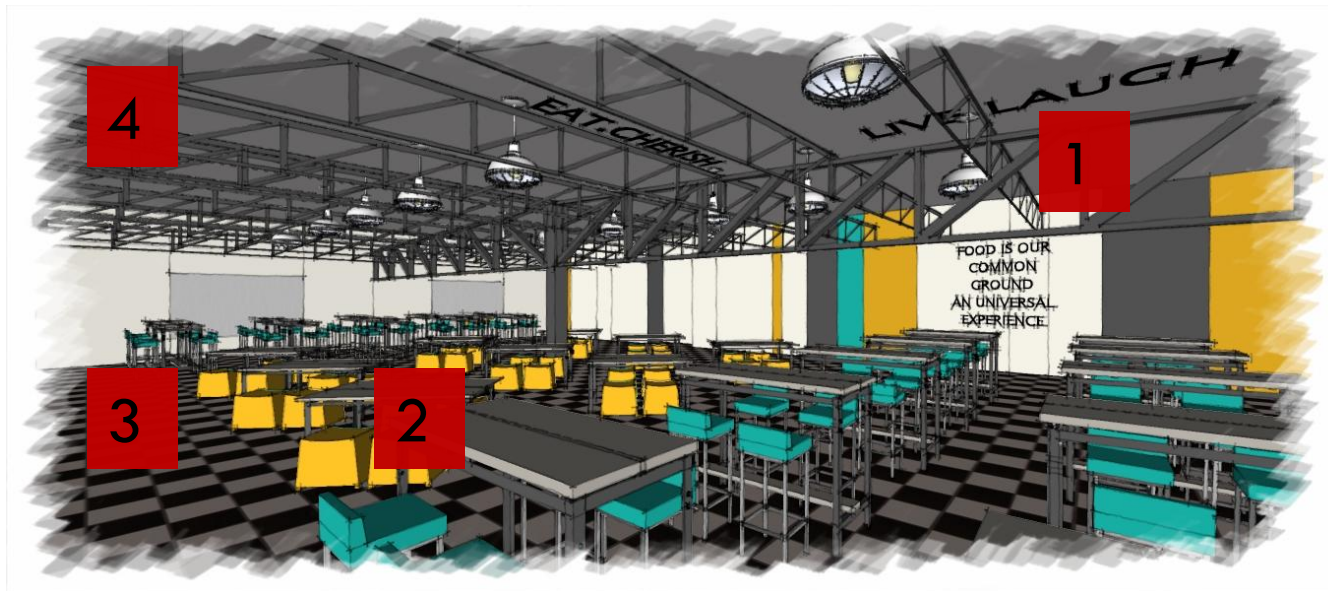
CANTEEN

20



MATERIALS/FEATURES

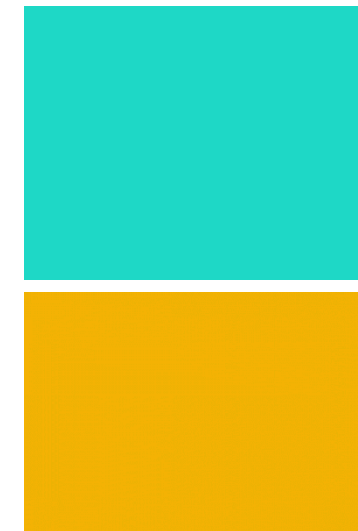
21



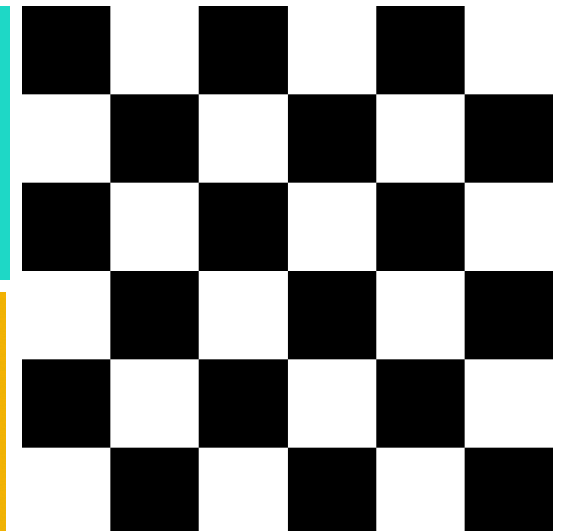
4. STEEL TRUSSES WITH SUSPENDED LIGHTS



1. MOTIVATIONAL/FUN QUOTES



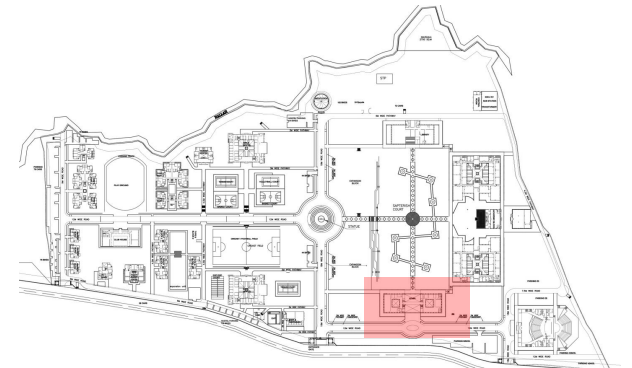
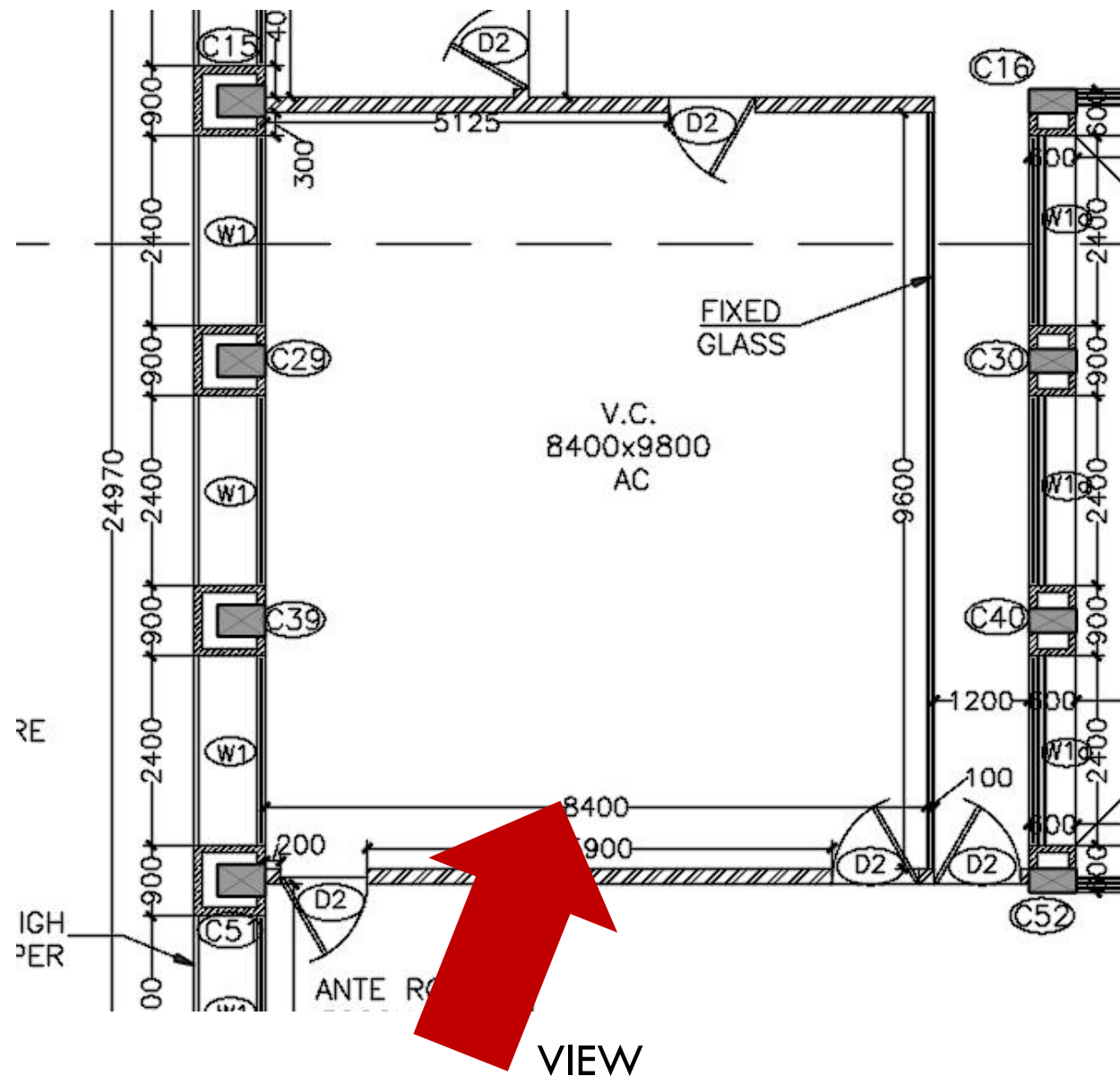
2. POP OF COLOUR
WALL PAINT/
FURNITURE



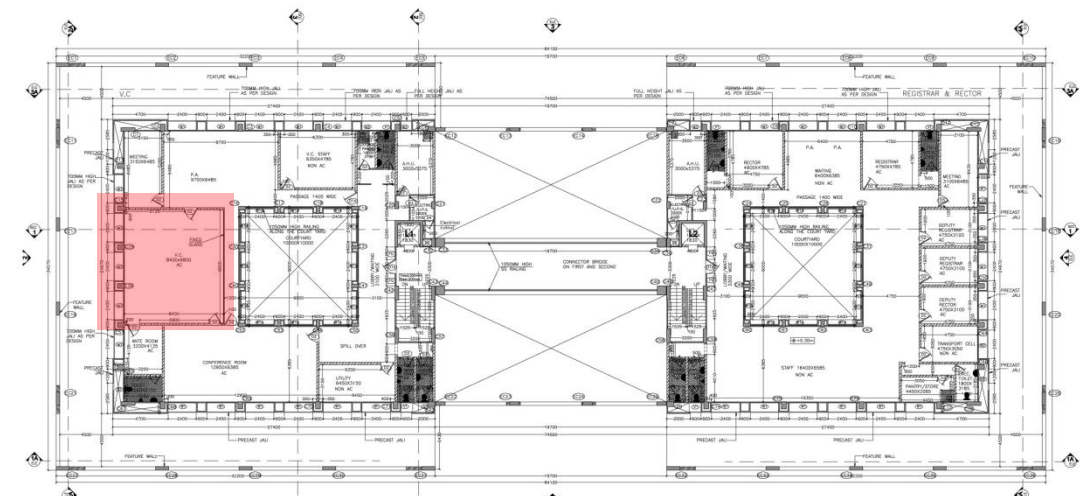
3. CHEQUERED
FLOOR TILES

VC CABIN-ADMIN BLOCK

22



KEY PLAN



SECOND FLOOR

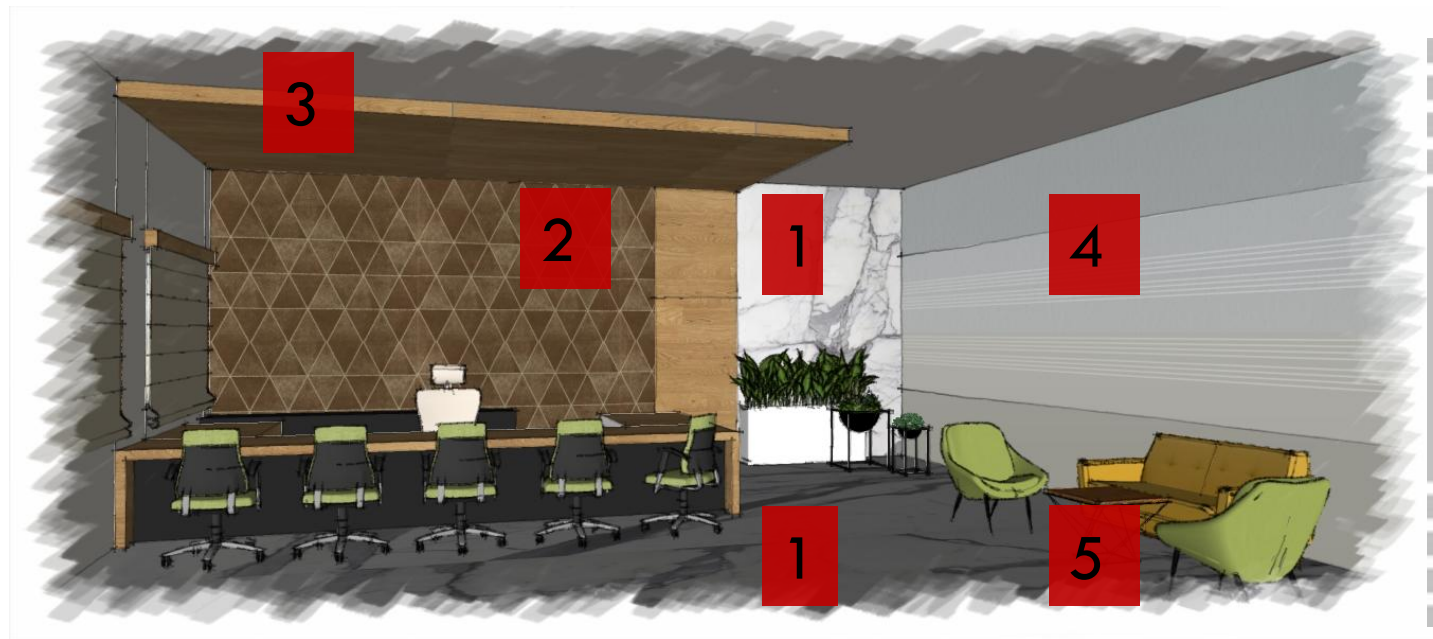
VC CABIN-ADMIN BLOCK

23



MATERIALS/FEATURES

24



4.GLASS FILM

5.POP OF COLOUR
FURNITURE



1. STATUARIO MARBLE
WALL/FLOOR



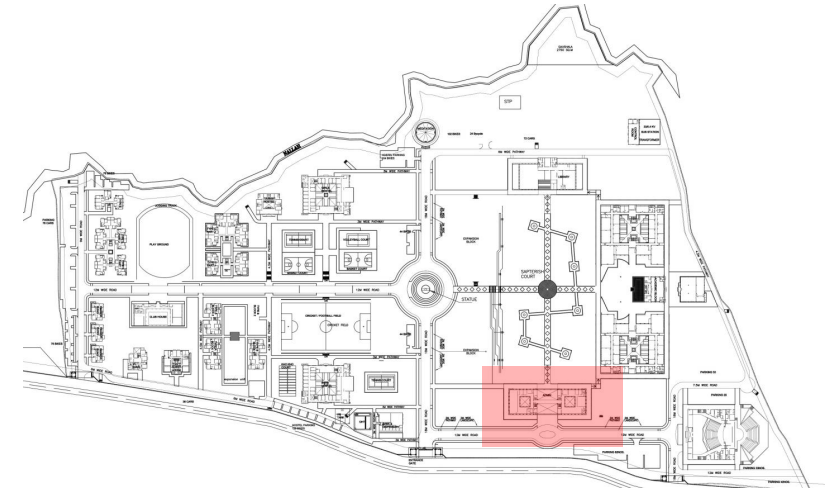
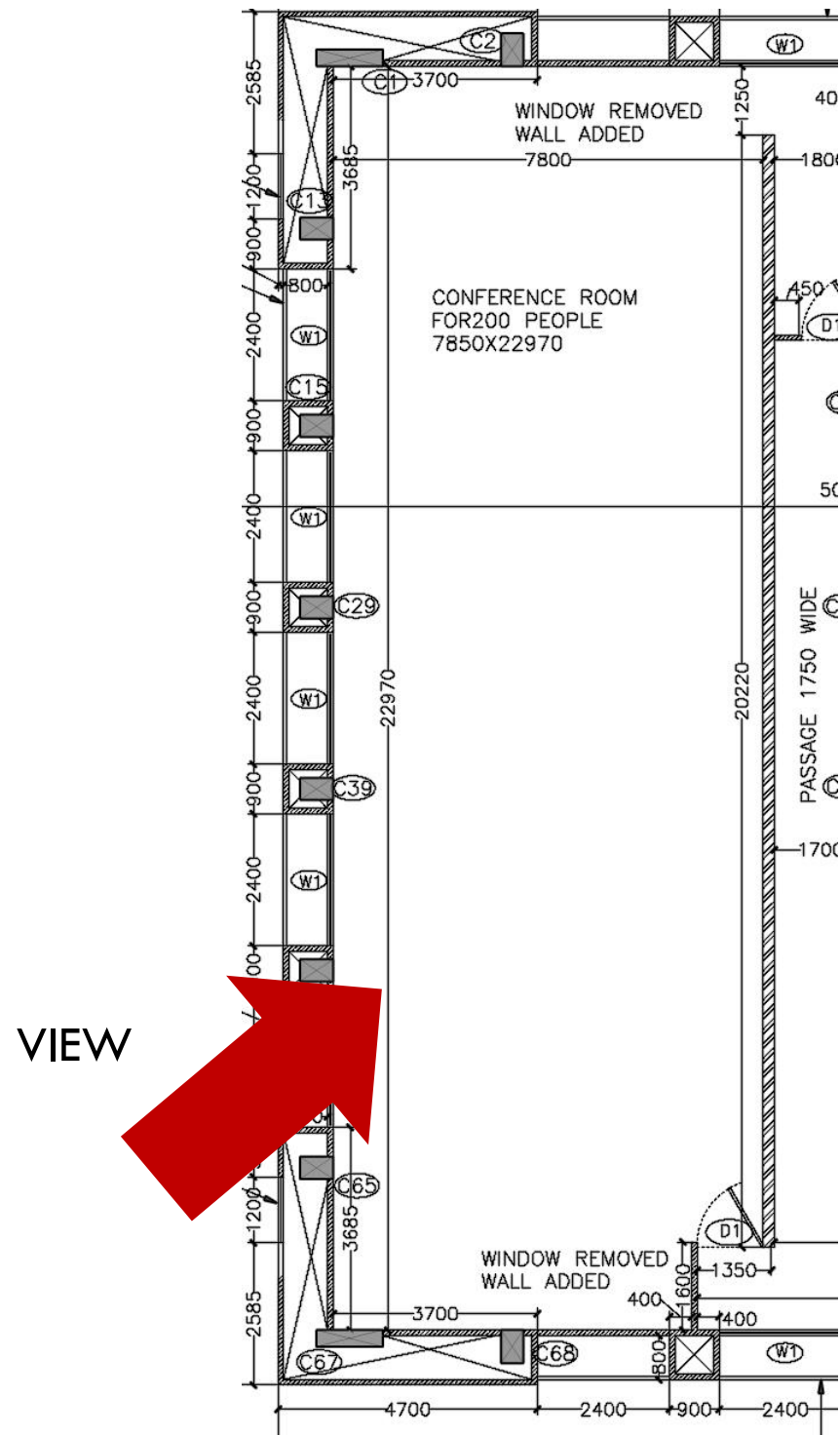
2. DESIGNER WOODEN
PANELLING



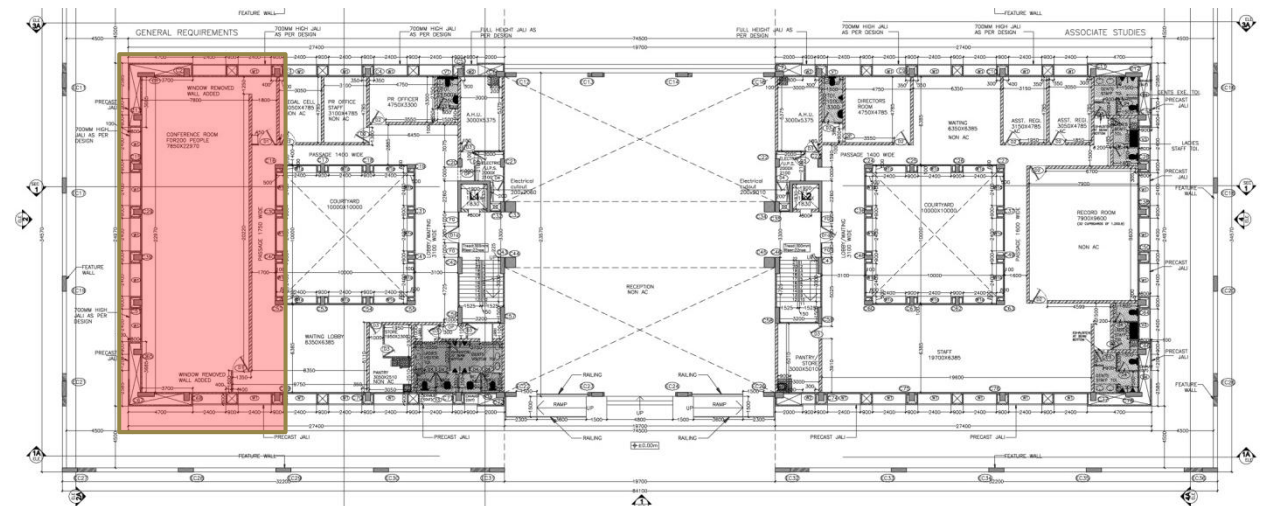
3.WOODEN PANELLING

CONFERENCE-ADMIN BLOCK

25



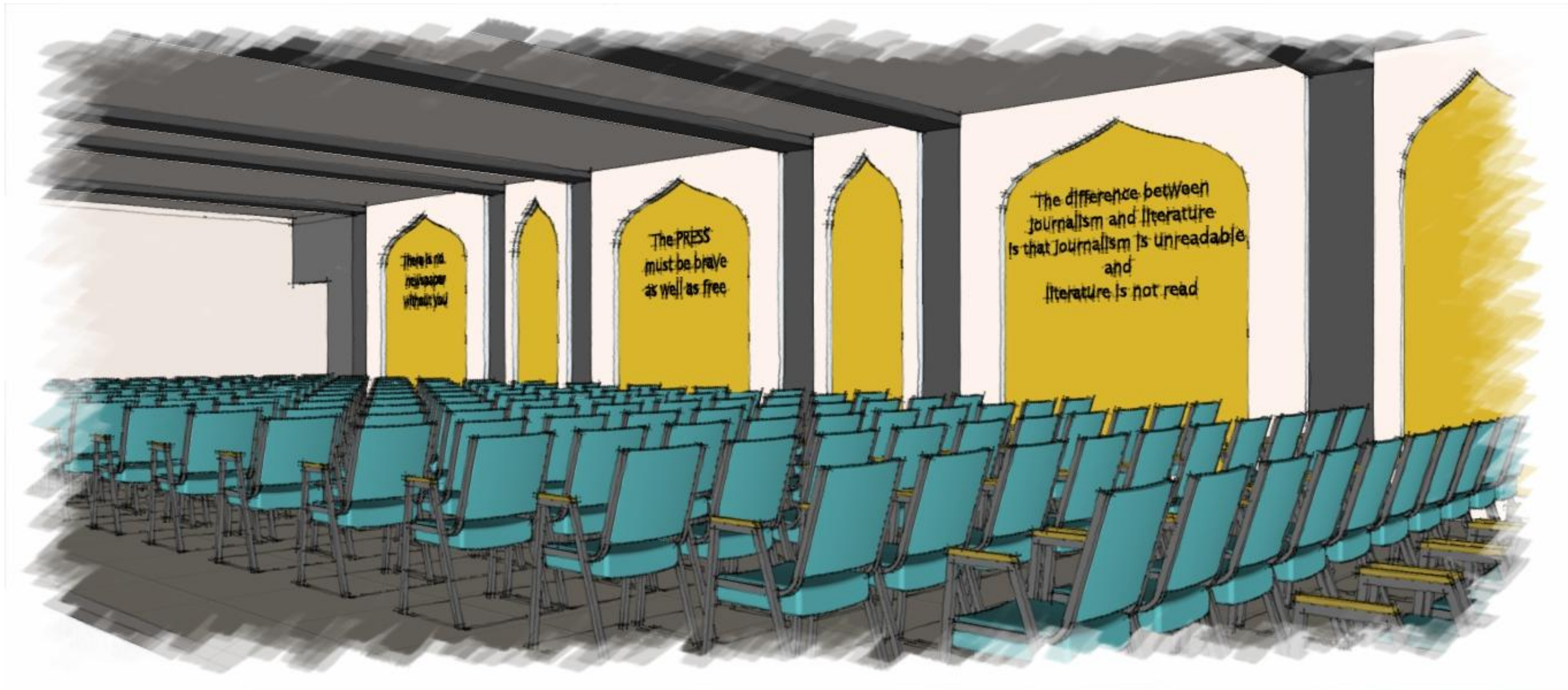
KEY PLAN



GROUND FLOOR

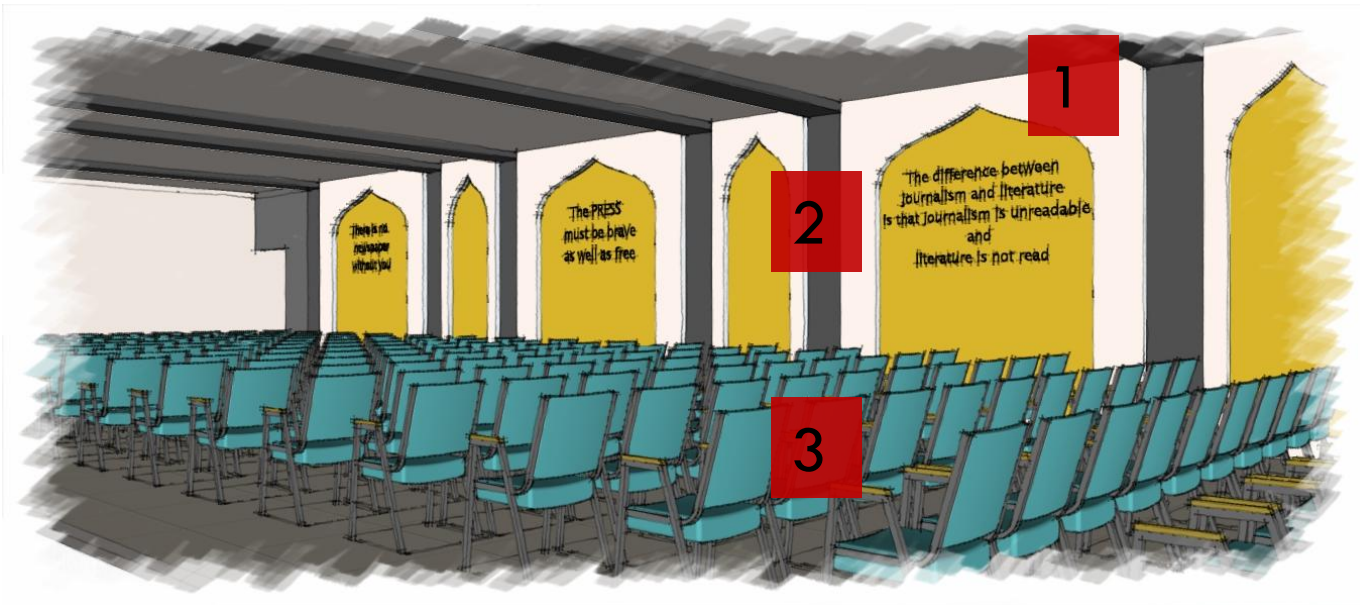
CONFERENCE-ADMIN BLOCK

26



MATERIALS/FEATURES

27



3. POP OF COLOUR
FURNITURE



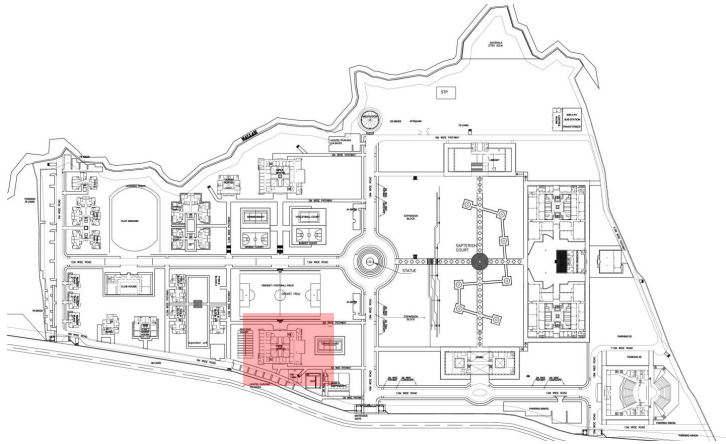
1. QUOTES RELATED TO JOURNALISM



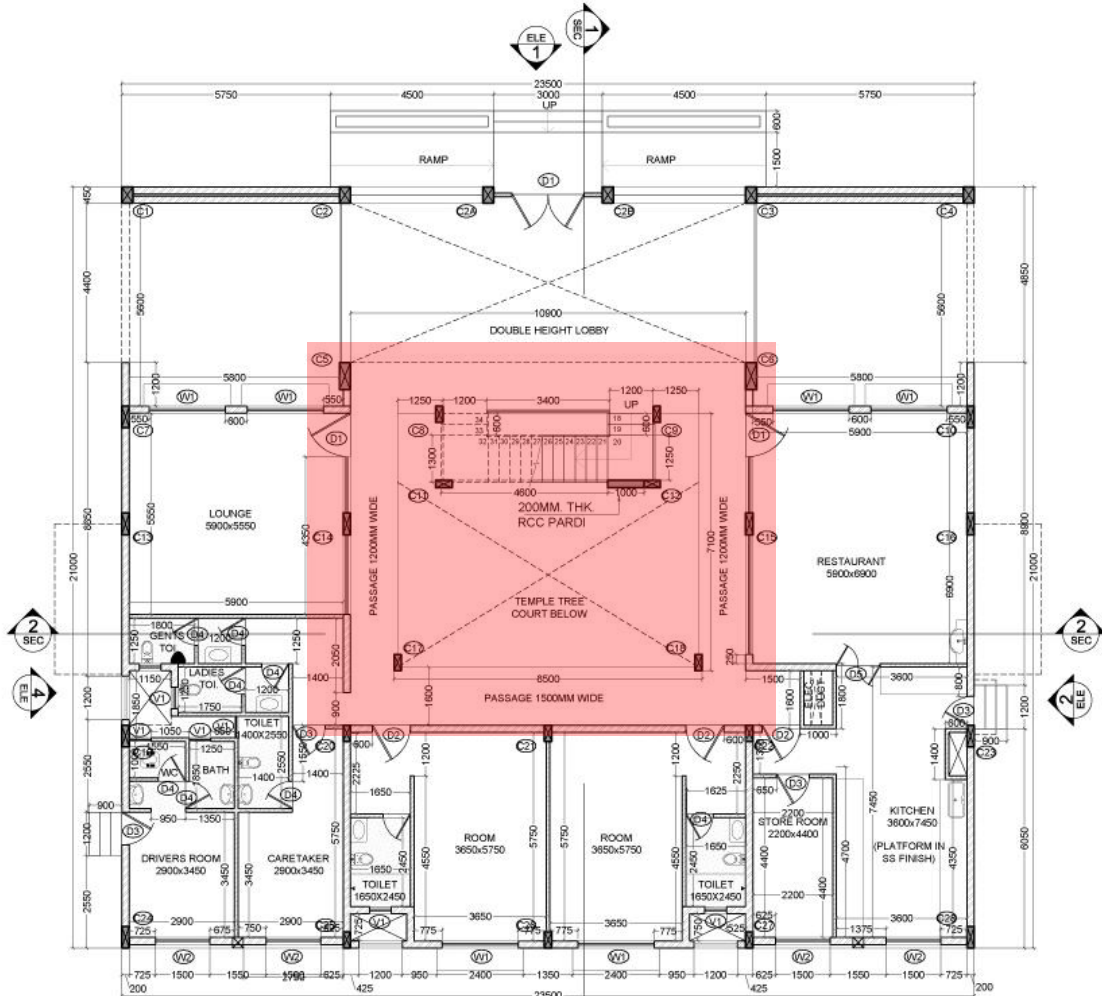
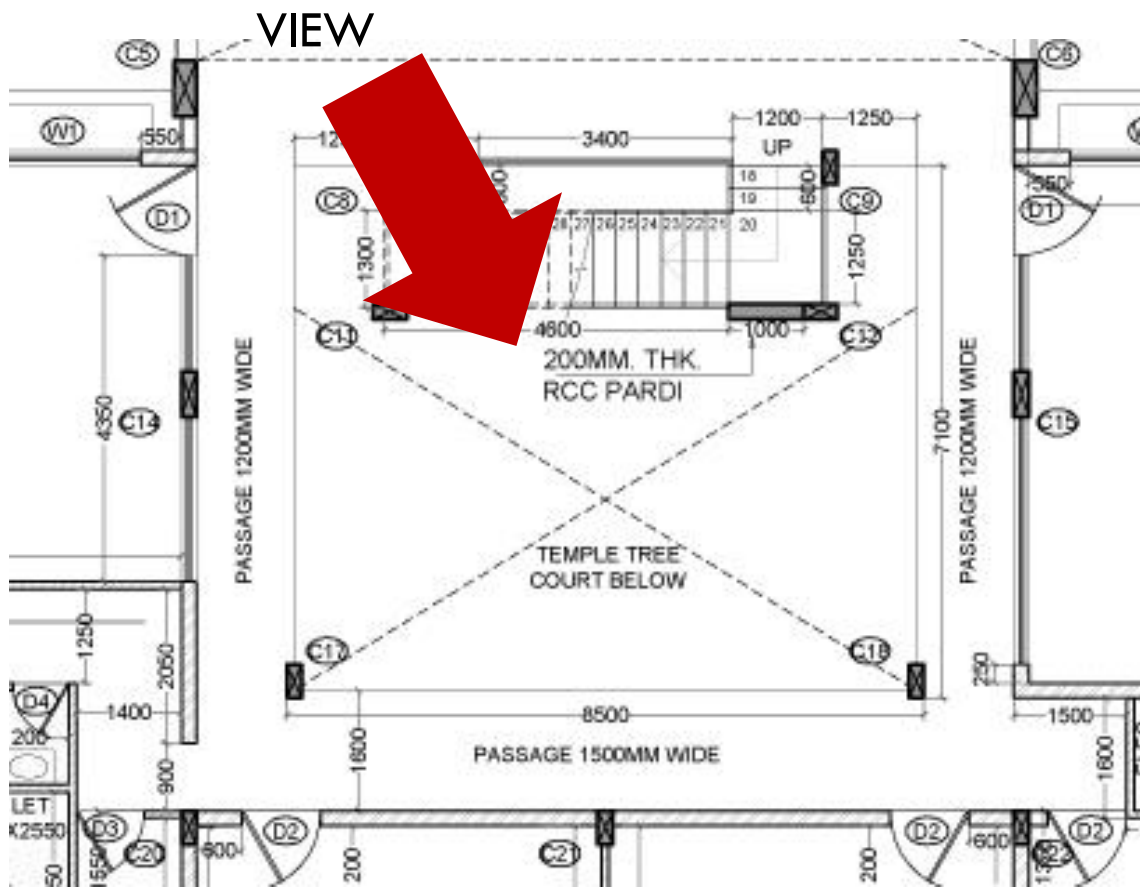
2. POP OF COLOUR ARCHES

TEMPLE TREE COURT-GUEST HOUSE

28



KEY PLAN



GROUND FLOOR

TEMPLE TREE COURT-GUEST HOUSE

29



MATERIALS/FEATURES

30



1.POP OF COLOUR-
SERIES OF ARCHES

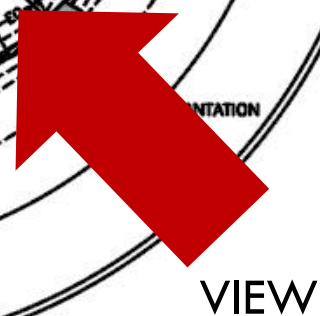


2.PEBBLE STONE
WITH SOFTSCAPE



3.VERTICAL GARDEN

31



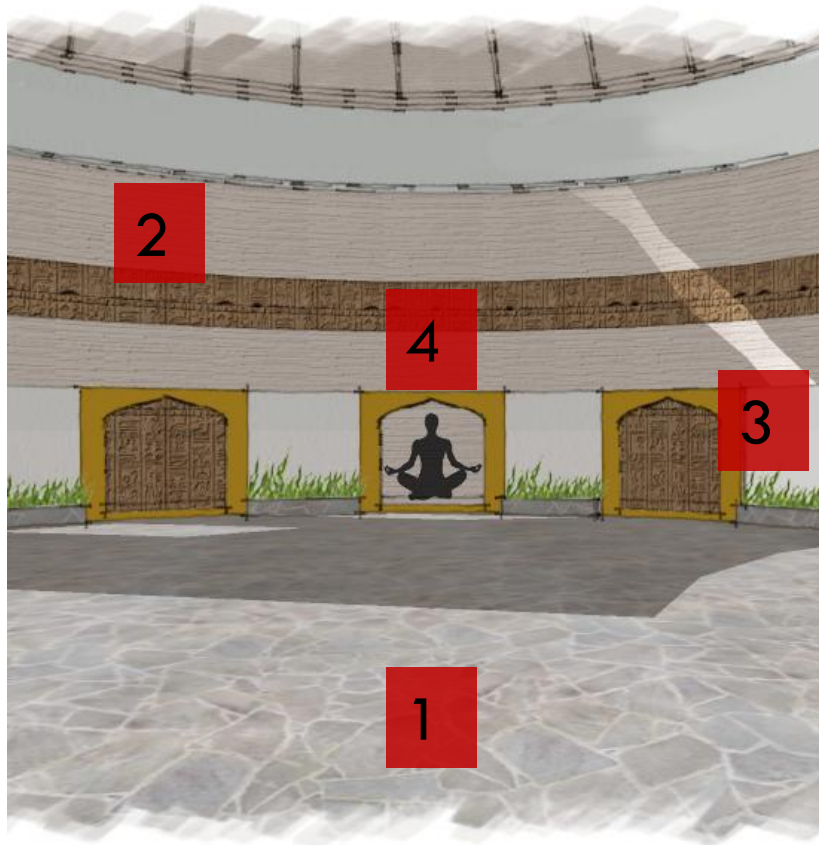
MEDITATION CENTRE

32

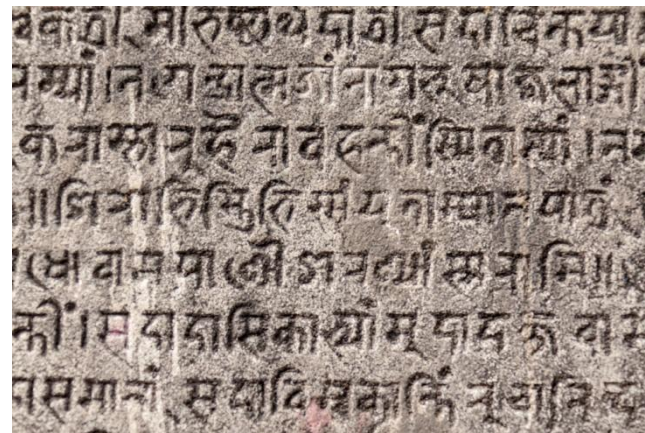


MATERIALS/FEATURES

33



1.GREY MARBLE FLOOR



2.CARVING,SACRED MANTRAS



3.POP OF COLOUR ARCHES



4.MEDITATING POSES

LIBRARY

34

THANK YOU

PTA DESIGNS PVT.LTD.

Architecture & Interiors

C-6/6, Rakshalekha Society, Lane 6, Koregaon Park, Pune -1 (M.H),

T: +91-20-26151350

E-4/42, Arera colony, Bhopal - 16 (M.P.), T: +91-755-4011850

W: www.ptadesigns.in | info@ptadesigns.in